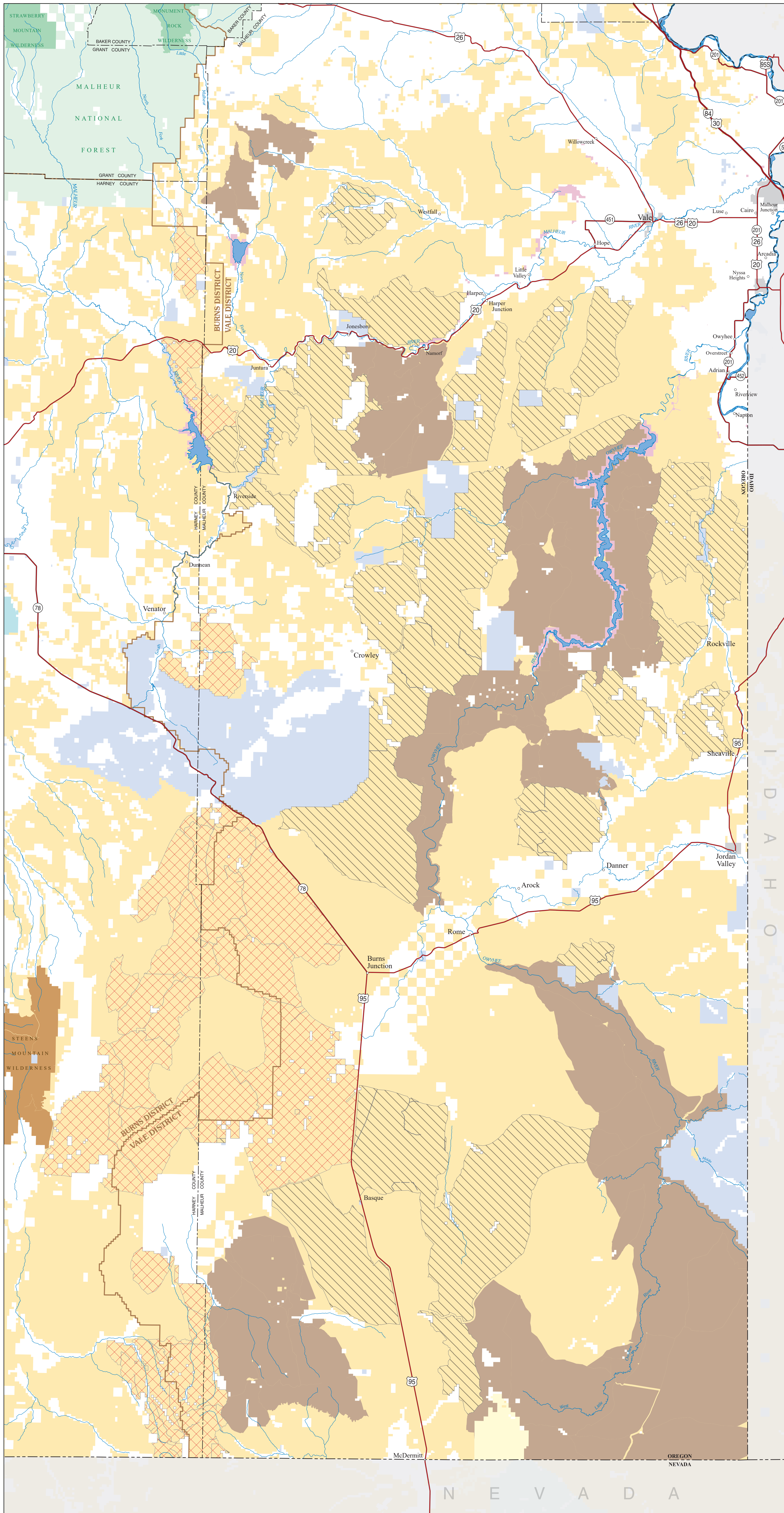




Proposed Wilderness Malheur County

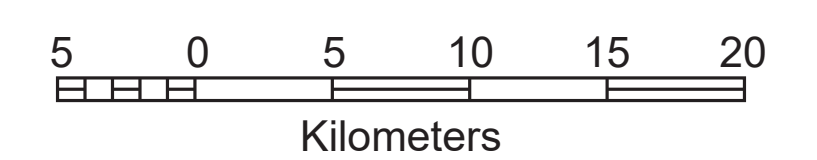
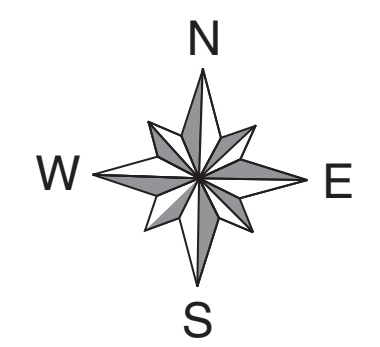
November 6, 2019

This map prepared at the request of Senator Ron Wyden

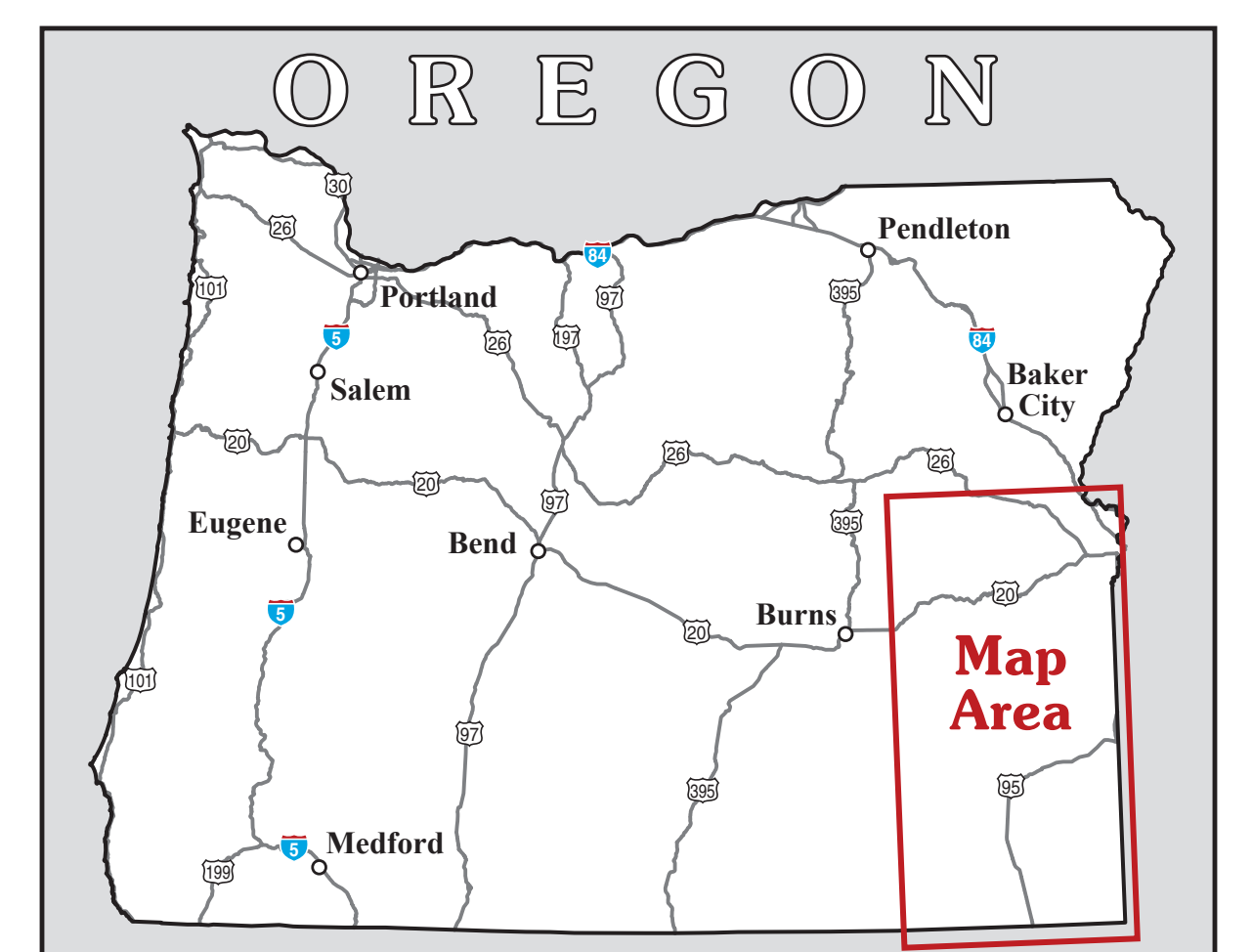


LEGEND

- Bureau of Land Management (BLM) Administered Land**
- Proposed for Designation as Wilderness
 - Proposed for Release from Protection under Wilderness Study Area (WSA) Designation or from Priority Protection of Lands with Wilderness Characteristics (LWC)
 - Not Considered; No Change to Current Management
- Administered Land**
- Bureau of Land Management (BLM)
 - BLM Wilderness
 - US Forest Service (USFS)
 - USFS Wilderness
 - Bureau of Indian Affairs
 - Bureau of Reclamation
 - US Fish and Wildlife Service
 - State
 - Private or Other



Scale 1:275,000
when plotted at 34"x44"



No warranty is made by the Bureau of Land Management as to the accuracy, reliability, or completeness of these data for individual or aggregate use with other data. Original data were compiled from various sources. This information may not meet National Map Accuracy Standards. This product was developed through digital means and may be updated without notification. M19-10-01